



5K Runway Run Waterford Airport

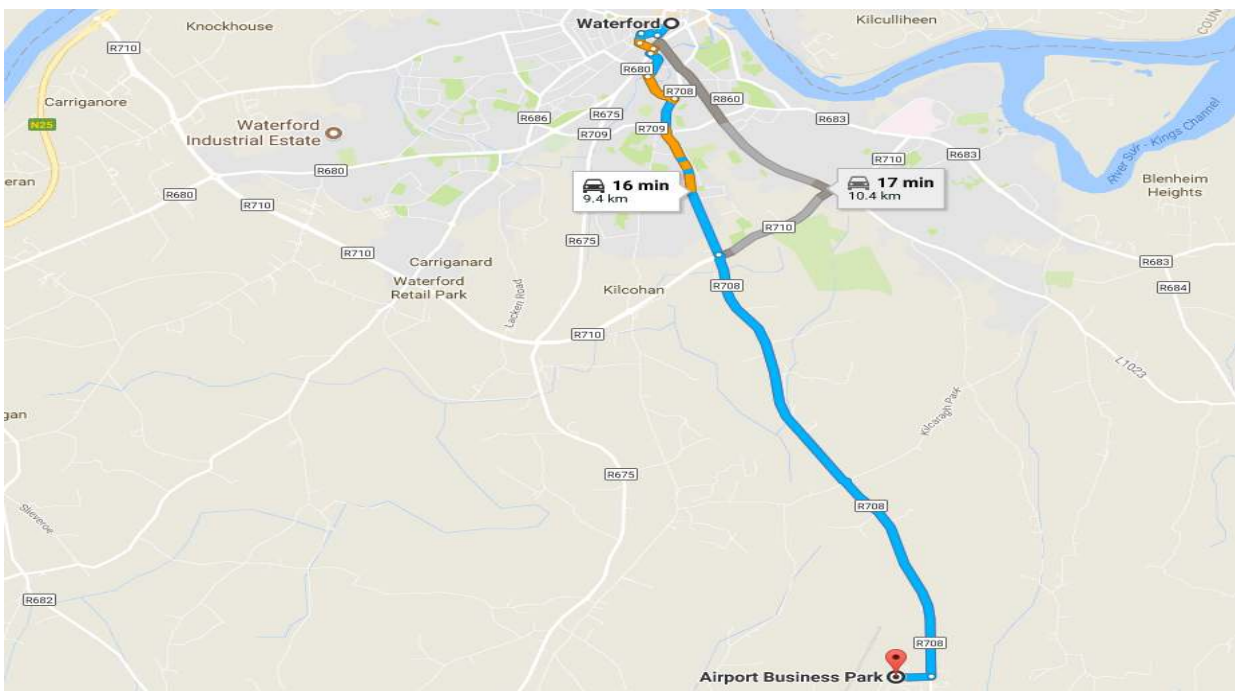
16th September 2017

Participant Information

Getting to the Event

The run starts and finishes at **Waterford Airport Business Park** and all parking and spectator areas are located here. The majority of the run will be on the Airport runway but **do NOT go to Waterford Airport directly**; the main Waterford Airport entrance will be reserved for emergency services and **runners and spectators will not be admitted.**

Go to the Waterford Airport Business Park. This is located next to Waterford Airport on the R708 (see map below). From Waterford City the Airport is very clearly signposted.



From Waterford City, take the R708 to Waterford Airport Business Park, located next to the Airport.

Arriving at the Run

When you arrive at Waterford Airport Business Park please follow the signs and directions from the stewards to the parking areas. The picture on the next page shows you where the main parking area is. On the diagram, you follow the yellow line from where is shown 'Main Entrance'.

Please park in an orderly manner, try not to block other vehicles and remember not to leave valuables visible in the car. The organizers and property owners will not be held responsible for any items lost or stolen during the event.

If you HAVE NOT picked up a Bib number from the RSC...

You will need to arrive in time to register between 8.00am and 9.00am at the area marked 'Registration' on the diagram below. Only registered runners with a valid bib number clearly displayed on their front will be allowed start the run and enter the Airport Runway. This must and will be strictly enforced.

At the registration area you will be asked for your name and the run number that you were emailed. You will be given a bib number with pins to attach to the front of your shirt and a timing chip to attach to your shoe (see instructions below about attaching this). You will also get a 'goodie bag'. **We do not have a bag drop area.**

If you HAVE picked up a bib number from the RSC...

You will need to arrive with ample time to park and walk to the staging area just before the Start/Finish point (see diagram below). **Runners must be at the staging area by 9.30am.**

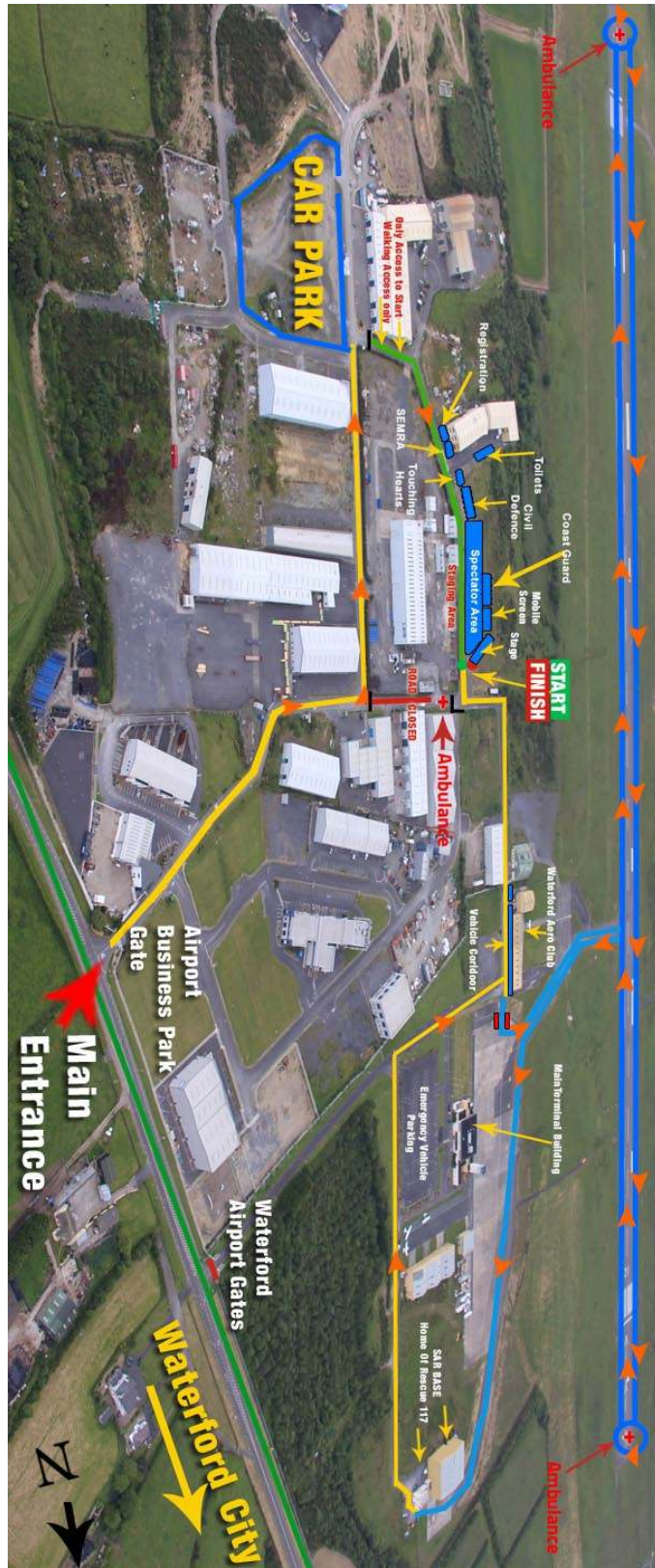
All runners must be assembled at the staging area at 9.30.

You **will not be admitted** to the staging area unless wearing a valid bib number! There will then be a safety briefing and warm-up session before the start at 10.00am sharp.

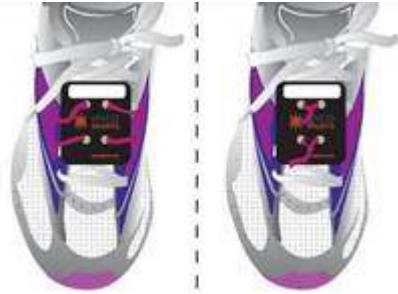
Important !

NO BOTTLES, SNACKS OR OTHER LOOSE ITEMS WILL BE ALLOWED ONTO THE ROUTE. These items can be a hazard to aircraft and must be kept out of the airport grounds.

DARA FITZPATRICK MEMORIAL RUN
WATERFORD AIRPORT
CHARITY
RUNWAY RUN
SAT 16TH SEPT **2017**
5K



Fitting your timing chip to your shoe



1. Thread the twist ties under your laces
2. Thread the timing chip onto the twist ties
3. Twist the ties together

Once you have completed your run volunteers will collect your timing chip. To assist with this process please secure your chip using the ties provided as these can simply be cut at the finish. Please ensure your timing chip is returned to us.

The Run Route

The route will take runners inside airport perimeter fence and security area of the airport, **therefore only runners with a bib number** or marshals with an event pass can gain access to this area and will be strictly monitored. The route is a flat 5km run around Waterford Airport, utilising the full length of the runway and taxiways bringing runners passed the Home of Rescue 117. The run will start and finish in the Airport Business Park. The diagram on the next page shows the route marked with direction arrows.

Please follow the instruction of the marshals at all times and **watch out for barriers and road cones that are used to mark the route and protect potential hazards**. There is an evacuation plan which you need to follow in the case of an emergency; please read the section on this below.

Any runner who cannot finish the run in 45 minutes may need to be picked up and assisted to the runway or Airport exit. This is unfortunately necessary to ensure the runway re-opens on time.

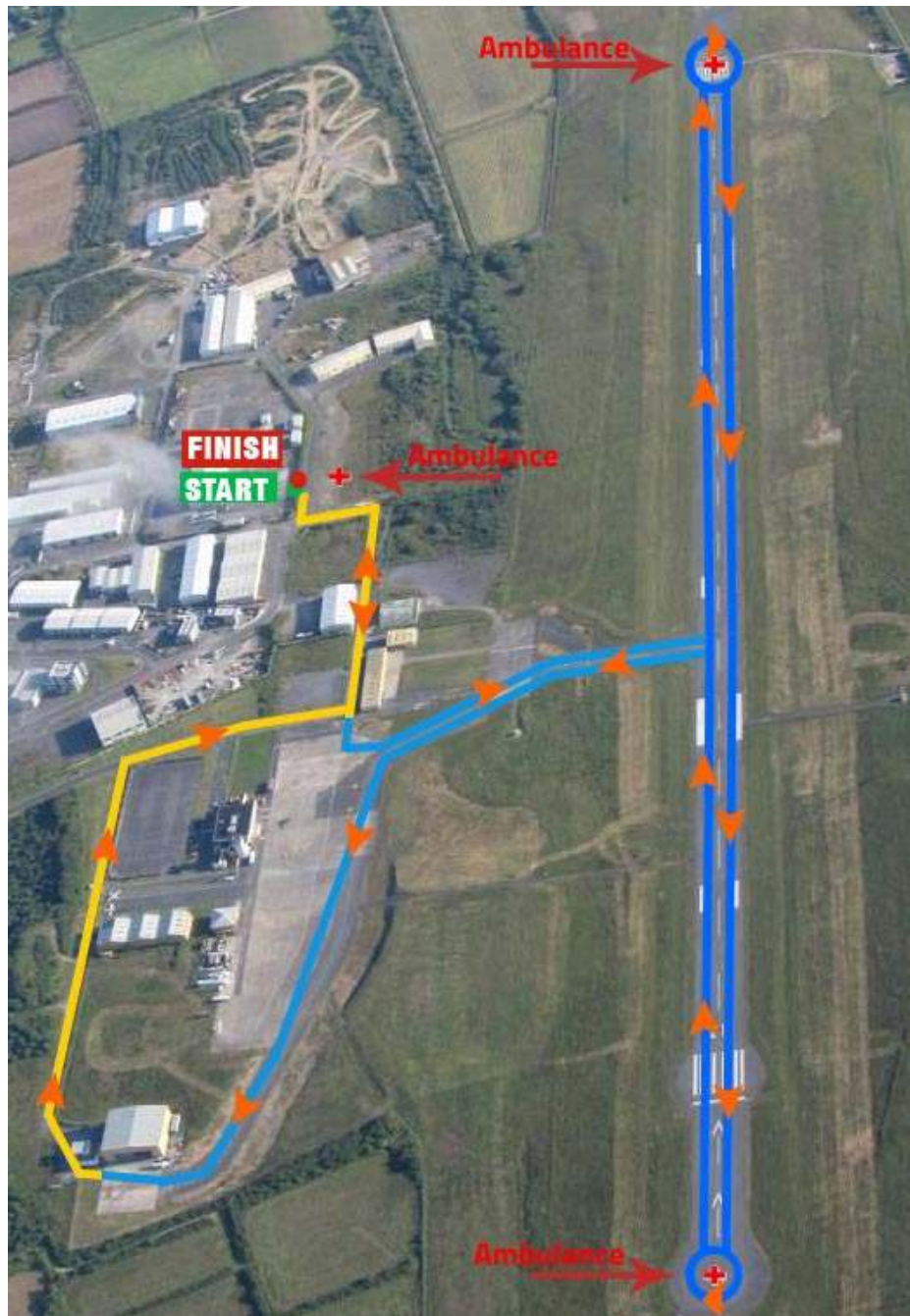
Detailed Description of the Route

The run starts on Falcon Avenue turns left and then right onto Lear Avenue, enters the Airport and straight past the Aero Club, continues straight through Gate 2 on to the Airside part of the route and **turning left** on to the taxiway heading out to the runway.

At the runway intersection **turning left onto the runway** and heading south-west down the runway towards the start of runway 03. You then turn following the markers and head north-east up the runway to the start of runway 21.

Turning again at the end of the runway, you head south west down the runway to the intersection and **turn left** back onto the taxiway heading for the main apron. Following the taxiway past the Airport building and down to the SAR Base (The Home of Rescue 117), out through Gate 4, you turn right and follow the road down to the main driveway for the airport.

Turning right to head up to Gate 2, you **turn left** outside this gate and straight past the Aero Club entering the business park and onto Lear Avenue and left and then right again onto Falcon Avenue to the finish line and roaring applause from the assembled crowd.



Emergency Procedures

Injury or Illness

If you or someone with you becomes unwell or injured during the run please attract the attention of the nearest marshal **straight away**. He or she will then assess the situation and make the necessary arrangements to help the person. We will have 3 ambulances positioned around the route that will assist the casualty if required.

Evacuation

In the unlikely event of the Airport needing to be evacuated, the marshals will sound a whistle repeatedly and escort the runners off the runway and Airport grounds in an orderly fashion. Follow the marshals' instructions. There is no need to run faster or cross grass areas; stay on the tarmac. All runners **must still pass through the FINISH** area even if the full route was not completed. Runners must have their timing chips removed and returned.

After the Run

On passing the finish line (well done!) you will be given the finisher's medal and bottled water will be provided. Continue out of the staging area and meet our charities, have some food and relax for a little while and enjoy the good thing that you've done. There are toilet facilities provided here also.

There will be a presentation of prizes for first male and female at approximately 11am.

All the runners' times will be available on the Total Timing website later in the day and there will be a link from dfrun.ie to this.

Spectators

Spectators can watch the start and finish in an area next to the staging area. Please leave the area exactly as you got it; take your rubbish home. The Airport Business Park has kindly facilitated us in allowing this event here and we must respect their property.

Thank You to Our Sponsors and Supporters



Cquent.ie
Web Solutions

Waterford Airport
Serving the Southeast for 30 years

MUSGRAVE
MarketPlace

MADE IN IRELAND
FLAHAVAN'S

CHC



Chia**bia**

WATERFORD CASTLE
The Island Resort